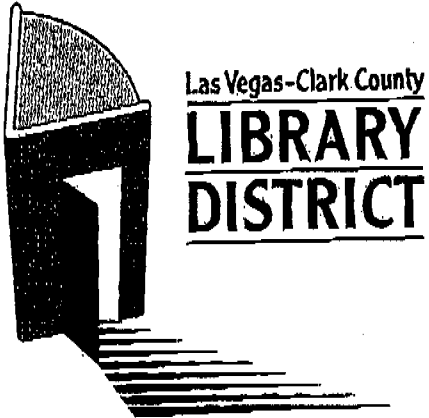


ADD#1
#110



ADDENDUM NO. 1

BID NO. 09-07

**SPRING VALLEY LIBRARY
EFFICIENCY REMODEL**

December 16, 2008

BID NO. 09-07
ADDENDUM NO. 1

DATE: December 16, 2008
PROJECT: Spring Valley Library Efficiency Remodel
ARCHITECT: Pugsley Simpson Coulter
2480 E. Tompkins #222, Las Vegas, NV 89121
(702) 435-1150
TO: Prospective Bidders

This addendum forms a part of the Contract Documents and modifies the original Contract Documents and Construction Specifications dated November 30, 2008.

All bidders are to acknowledge receipt of this addendum on the Bid Form. Failure to do so may subject the bidder to disqualification.

This Addendum consists of:

CHANGE TO INVITATION TO BID - ESTIMATED COST:

The revised estimated cost is \$289,427.00

CHANGES TO SPECIFICATIONS:

AD1-SA1 SECTION 01750 - Spare Parts and Maintenance Materials

In paragraph 1.6, Architectural Table, change Section 09650 Requirements to read: 5% quantity for each type and color of flooring and weld rod specified.

AD1-SA2 SECTION 09650 - Resilient Flooring

- a. Revise paragraph 2.3 B to read:
 - B. Provide seaming plan showing direction and location of all seams, indicating all cold and hot weld joints with rod colors indicated.
- b. Add the following to paragraph 1.10:
 - C. Furnish five (5) percent of quantity for each type and color of weld rod specified. Properly label and package extra materials. Deliver to Owner's designated storage area.
- c. Revise paragraph 2.1 A to read:
 - A. Product Name: Rubber 1 to be Noraplan Stone acoustic, color: 2099 Ice Blink, Article 148, slightly textured surface, 4.0 mm (0.16 inches) thickness, 1.6 mm (.06 inches) rubber top layer, 2.4mm (0.10 inches) rubber foam backing.

BID NO. 09-07
ADDENDUM NO. 1
PAGE 2

- d. Revise paragraph 2.2 C to read:
- B. Rubber 1 interior seams shall be cold welded. Compound #915. Nora rubber content approximately 31%. Weld rod color in Rubber 1 to be 4638 Key West. Rubber 2 interior seams shall be butt joined. Provide heat weld at transitions between Rubber 1 and Rubber 2 with weld rod color 2968 Sweet Olive.
- e. Revise paragraph 2.2 S to read:
- S. Nora Environcare, color: Sweet Olive, non-acoustic, Article 2370, smooth surface, 2.0 mm (0.08 inches) Thickness.
- f. Delete paragraph 2.3 in its entirety.
- g. Add the following to paragraph 3.3:
- I. Install 4mm material first. Provide skim coat at seam (following the Nora Tech 89 Method Statement attached, except instead of norament as described in step 1, use noraplan acoustic) from transition point to 1'-0" away, creating a ramp for the 2mm material to install on.
- h. Delete paragraph 3.4 in its entirety.

CHANGES TO DRAWINGS:

AD1-A1 SHEET E1.01


- a. All new data location will be routed to the communication room/data room. This will be determined in field.
- b. The data at demolished desk will be terminated to the nearest source.
- c. The contractor will determine from as-builts provided by owner or to be determined by contractor to trace all communication circuits.
- d. The note #7 calls out an infrared security scanner. This equipment will be provided by manufacturer and only a power source is need shown as receptacle at the entrance/exit doors.
- e. Use 3/4" conduit if only used for three or less connections. Any more connections that are combined contractor will follow NEC sizing conduit.
- f. A sketch will be provided to show location of the moved switch locations from the demolition plan to the Lighting, Power, and Communication plan.

ATTACHMENTS:

1. Sketch E1.01-1; marked Delta 3; Addendum.
2. Sketch E1.01-2; marked Delta 3; Addendum.

THIS IS THE FINAL ADDENDUM FOR BID NO. 09-07

END


Stephen J. Rice
General Services Director

Method Statement for the Installation of Different Thickness Resilient Floor Coverings Without Transition Strips

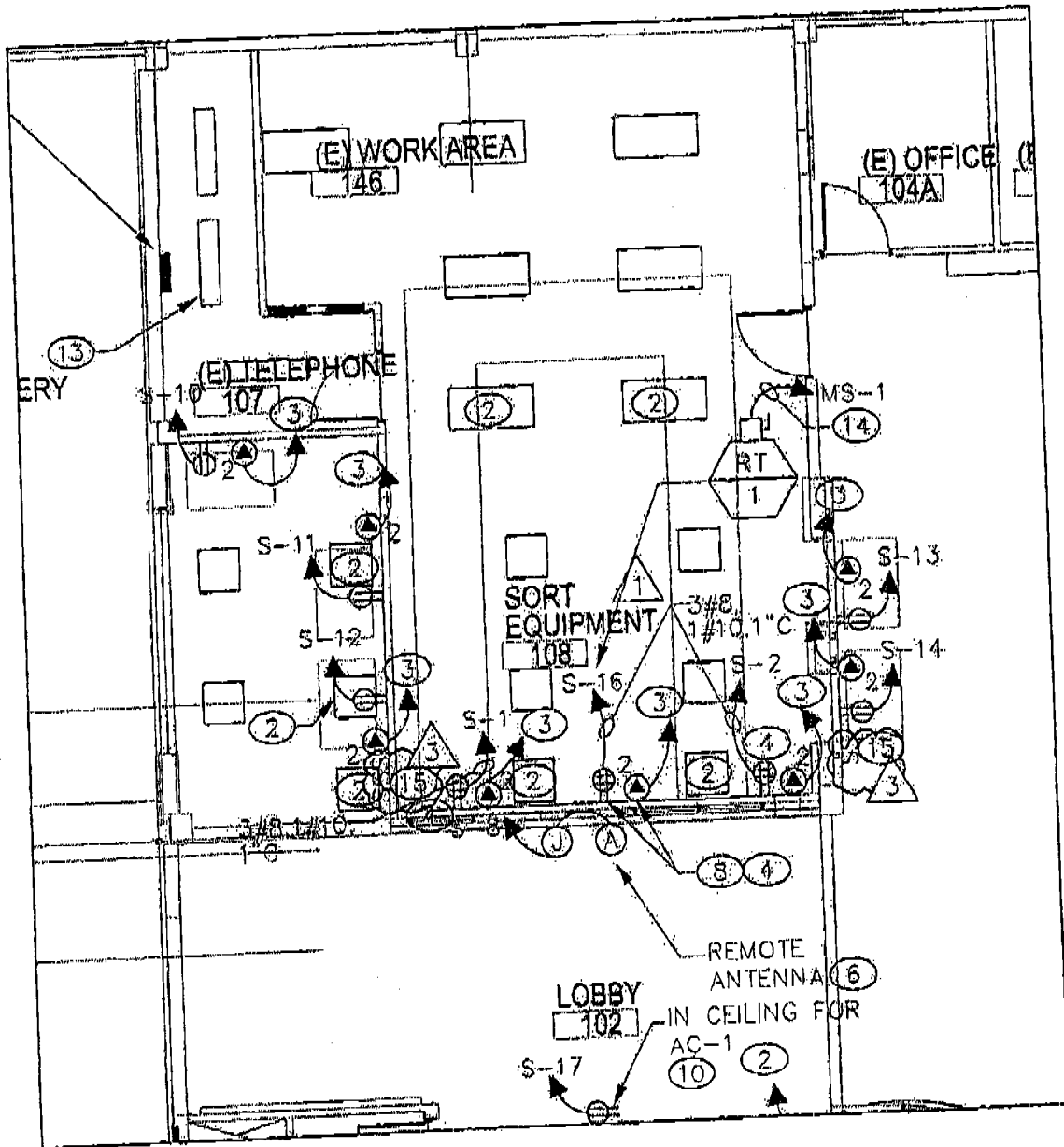
- 1) Follow the Installation Guide and install the thicker product (**norament**[®]).
- 2) Using either PU Adhesive or a suitable smoothing compound, apply a band (approximately 1-foot) along the edge of the pre-installed flooring. This should be applied using a suitable notched trowel (resulting in the correct height, 2 mm lower than the thicker flooring) and allow to dry/cure.
- 3) If required, repeat #2 until the required height is obtained.
- 4) Using a flat trowel, smooth the surface reducing it gradually down to nothing, filling in the ridges left from the notched trowel.
- 5) Install the thinner product (**noraplan**[®]) following the Installation Guide.



Issued By: Kevin Phillips
Issue Date: June 2008

nora[®] **tech 89**

nora systems, inc
94 Glenn Street
Lawrence, MA 0184
Tel: 800-336-5096 x16
Fax: (978) 687-464
E-mail: tech@nora.com
www.norarubber.com



ELECTRICAL DEMOLITION PLAN



SCALE: 1/8"=1'-0"

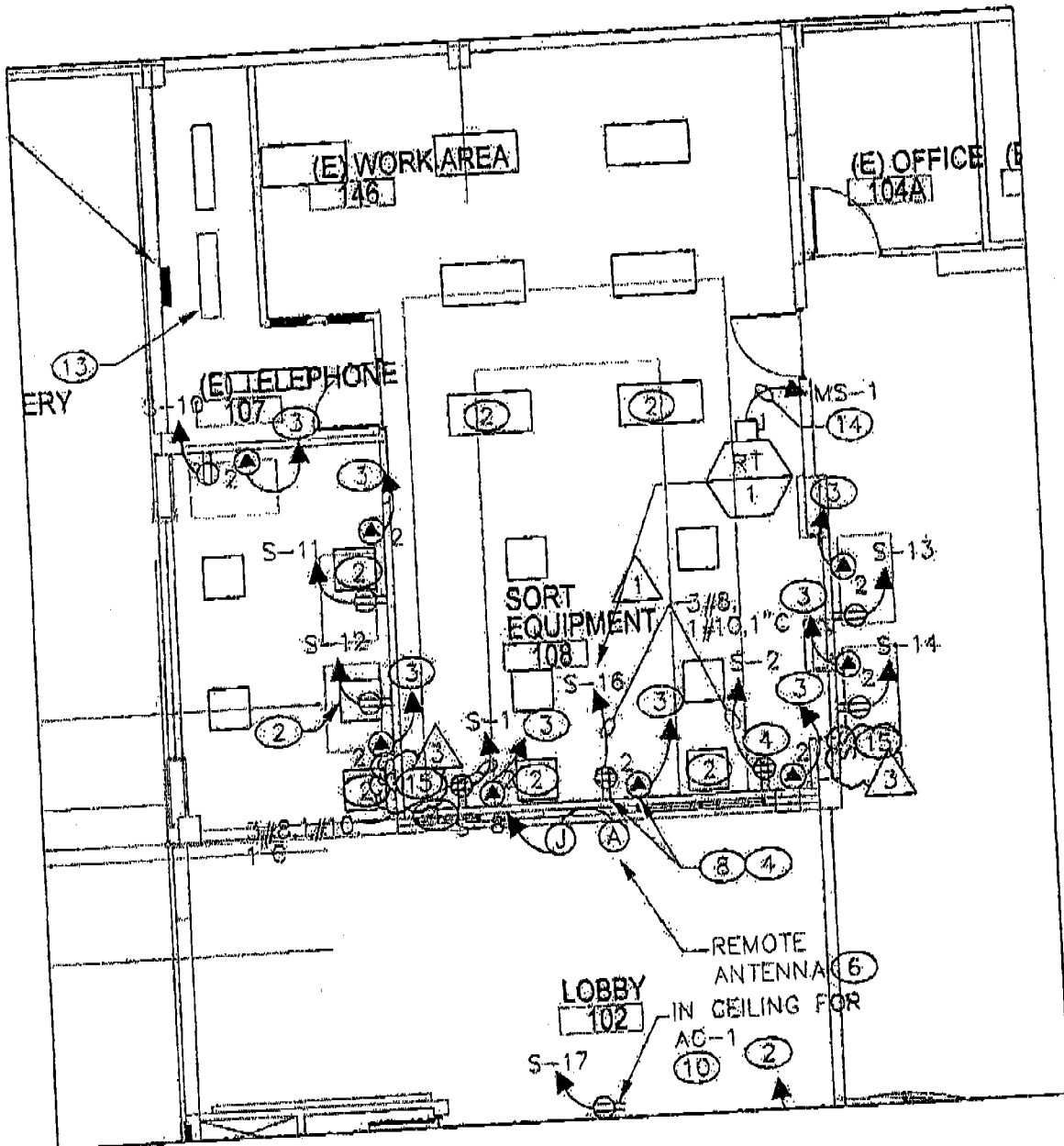
WKS Consulting Engineers, Inc.
 5489 S Durango Dr., Suite 100
 Las Vegas, NV 89110
 P: 702.871.3021
 F: 702.871.0029

SHEET TITLE	
PROJECT NUMBER: 08048	
DRAWN BY: PM	
CHECKED BY: TA	
SUBMITTAL: BID	
DATE: 11/20/08	
SHEET NUMBER	

PROJECT NAME
**SPRING VALLEY LIBRARY
 EFFICIENCY REMODEL**
 4280 S JONES BLVD.
 LAS VEGAS, NV 89103

ARCHITECT
WELLES PUGSLEY
 ARCHITECTS L.L.P.
 2480 EAST TOMPkins AVE. SUITE 222, LAS VEGAS NEVADA, 89121
 ph. 702.435.1150 fax: 702.435.7699 e-mail: wpa@wellespugsleyarchitect.com

SKETCH
E1.01-
 REVISIONS
 3 ADDENDL



ELECTRICAL LIGHTING, POWER AND COMMUNICATION



SCALE: 1/8" = 1'-0"

NOTES:

(15) PROVIDE NEW SWITCHES MAINTAINING SAME AS EXISTING. EXTEND SAME CIRCUIT TO NEW LOCATION.



UK
Consulting Engineers, Inc.
5188 S. Durango Dr., Suite 100
Las Vegas, NV 89113
P: 702.477.3421
F: 702.477.3183

SHEET TITLE
PROJECT NUMBER: 08048
DRAWN BY: PM
CHECKED BY: TA
SUBMITTAL: BID
DATE: 10/30/08
SHEET NUMBER

PROJECT NAME
**SPRING VALLEY LIBRARY
EFFICIENCY REMODEL**
4280 S JONES BLVD.
LAS VEGAS, NV 89103

ARCHITECT
WELLES PUGSLEY
ARCHITECTS L.L.P.
2488 EAST TOMPKINS AVE. SUITE 222, LAS VEGAS NEVADA, 89121
ph: 702.433.1150 fax: 702.435.7699 e-mail: wpa@wellespugsleyarchitect.com

SKETCH
E1.0'
REVISIONS
3 ADDEN